

# Bowel Cancer Profile (Colorectal Cancer)

- Bowel cancer (colorectal) is the third most common cancer in the UK, after lung and breast cancer<sup>1</sup>.
- 14,604 women and 18,040 men are diagnosed with bowel cancer each year in England.
- In the UK it is the second most common cause of cancer death, after lung cancer.
- In England, there are just over 13,000 bowel cancer deaths each year.
- There are about 107 new cases of bowel cancer each day.
- Around 95% of all diagnoses are in people over the age of 50. However, this still leaves a considerable number (around 1800) of bowel cancer cases diagnosed each year in people under the age of 50.

**14,604** women  
and **18,040** men  
are diagnosed with bowel cancer  
each year in England.

1. Cancer Research UK (2010) <http://info.cancerresearchuk.org/cancerstats/types/bowel>

# Bowel Cancer: Symptoms

The symptoms of bowel (colorectal) cancer can be:

- Bleeding from your bottom and/or blood in your poo
- A change in bowel habit lasting for 3 weeks or more especially to looser or runny poo
- Unexplained weight loss
- Extreme tiredness for no obvious reason
- A pain or lump in your tummy

People with bowel cancer may experience one, some, all of the above or no symptoms at all. **Remember, people with these symptoms will mostly not have bowel cancer.**

## Bowel Cancer: Survival and Early Diagnosis

- Over 93% of patients diagnosed at the earliest stage of the disease survive five years compared with only about 7% of patients with metastatic disease.
- Five-year survival rates for bowel cancer have more than doubled over the last 40 years. However, they are still just above 50%.
- Younger bowel cancer patients have a better prognosis than older patients.

# Incidence and Mortality by Cancer Network

(per 100,000)

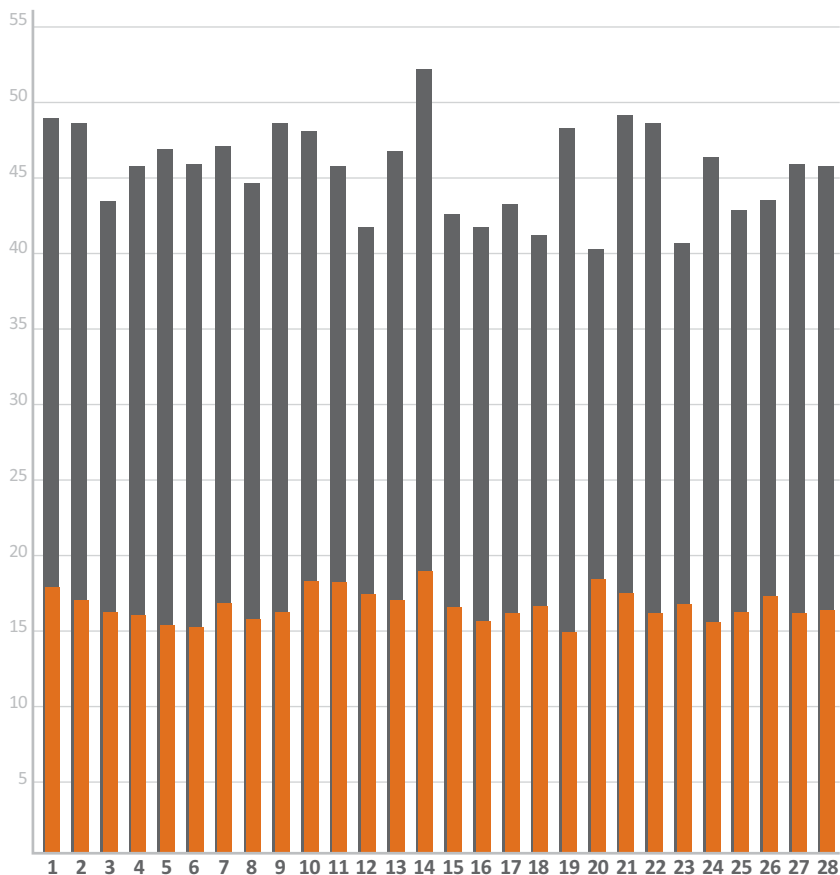
| PCT                                  | Incidence | Mortality |
|--------------------------------------|-----------|-----------|
| 1 3-counties                         | 47.9      | 18.1      |
| 2 Anglia                             | 47.6      | 17.2      |
| 3 Arden                              | 42.5      | 16.4      |
| 4 Avon,Somerset & Wiltshire          | 44.8      | 16.2      |
| 5 Central South Coast                | 45.9      | 15.5      |
| 6 Dorset                             | 44.9      | 15.4      |
| 7 East Midlands                      | 46.1      | 17        |
| 8 Essex                              | 43.7      | 15.9      |
| 9 Greater Manchester & Cheshire      | 47.6      | 16.4      |
| 10 Greater Midlands                  | 47.1      | 18.5      |
| 11 Humber & Yorkshire Coast          | 44.8      | 18.4      |
| 12 Kent & Medway                     | 40.8      | 17.6      |
| 13 Lancashire &South Cumbria         | 45.8      | 17.2      |
| 14 Merseyside & Cheshire             | 51.1      | 19.2      |
| 15 Mount Vernon                      | 41.7      | 16.7      |
| 16 North England                     | 40.8      | 15.8      |
| 17 North East London                 | 42.3      | 16.3      |
| 18 North London                      | 40.3      | 16.8      |
| 19 North Trent                       | 47.3      | 15        |
| 20 North West London                 | 39.4      | 18.6      |
| 21 Pan Birmingham                    | 48.1      | 17.7      |
| 22 Peninsula                         | 47.6      | 16.3      |
| 23 South East London                 | 39.8      | 16.9      |
| 24 South West London                 | 45.4      | 15.7      |
| 25 Surrey, West Sussex and Hampshire | 41.9      | 16.4      |
| 26 Sussex                            | 42.6      | 17.5      |
| 27 Thames Valley                     | 44.9      | 16.3      |
| 28 Yorkshire                         | 44.8      | 16.5      |

# Incidence and Mortality by Cancer Network

(per 100,000)

Graph

INCIDENCE MORTALITY



Incidence (rate) by Cancer Network - Colorectal Cancer, 2006-2008. Source: Cancer e-atlas  
 Mortality (rate) by Cancer Network - Colorectal Cancer, 2007-2009. Source: Cancer e-atlas